



## Download These Best Swipe Files Free:

Agile	Application Development	Big Data	Business Analysis	Business Intelligence	Configuration Management
Database Administration	Data Management Information Security	Data Mining ITIL	DevOps IT Operations Management	Distributed Computing MongoDB	Game Development Network Administration
Network Security	NoSQL	Open Source	Project Management	SAP ERP	Software Development
Software Engineering	Statistical Analysis	Strategic Planning	Virtualization	Web Development	

## CERN picks Cisco to collaborate on advanced networking capabilities

 0

Cisco joins CERN's openlab industry partnership platform to help develop new computing infrastructure technology

...The European Organisation for Nuclear Research (CERN) has welcomed networking supplier Cisco to its science and industry partnership platform, openlab, as it embarks in a round of experiments on the Large Hadron Collider (LHC).

With the LHC back online after a lengthy upgrade process and operating at record-breaking energy levels early in its second research run, CERN is generating unprecedented amounts of data.

...The LHC's millions of sensors are capable of producing data at a rate of a petabyte per second – the equivalent of 20,000 Blu-ray discs – and this is expected to increase significantly in the next decade, necessitating not just huge amounts of compute and storage capacity, but new approaches to the network tying it together.

...To this end, Cisco's partnership with CERN will research and develop next-generation, highly secure computing infrastructure capable of dealing with the coming data explosion that will be helpful not just to CERN's scientists, but the wider world as well.

CERN and Cisco have each assigned a team of experts to the project, with a mandate to investigate concepts that build on the evolution of hardware, heterogeneous system designs and the increasing functionality of network interface hardware.

... ? Cern is using Software AG's in-memory data management software BigMemory to support system availability for the Large Hadron Collider.

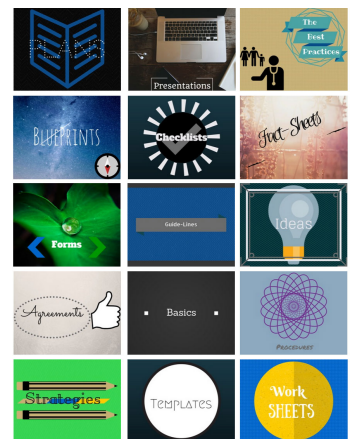
...As the public and private sector evolve to a digital platform, open innovation and collaboration across industry leaders, research institutes, universities and startups will be vital to the success of the global economy," said Maciej Kranz, vice-president of corporate technology at Cisco.

Cern openlab is a framework to develop and test state-of-the-art technology in CERN's research environment.

...The lab has just kicked off a three-year phase looking at a number of projects around data acquisition, compute platforms, storage architecture, compute provisioning and data analytics, as well as networking.

[Read Full Article »](#)

## Would You Like Me to Hand You All Swipe File Blueprints? CLICK HERE



READ PREVIOUS POST:

**Game Tracker: Overcoming My Golf Game's Vulnerabilities Through Arccos**

2015 Forbes.com LLCTM All Rights Reserved  
AdChoices Privacy Statement Terms and Conditions Help Contact Us Jobs At Forbes Reprints &...

**PRINCE2®**  
ED EXAMINATION INSTITUTE



BY **Loyalist**  
CERN/Cisco/Software AG/IBM/Oracle/Google





Get YOUR FREE ITIL Book

We never share, trade, sell, deliver, reveal, publicize, or market your email address in any way, shape or form.

- Sign up
- Get your free ITIL book
- Receive exclusive deals

Email:

I'd love a free ITIL Book!

POPULAR POSTS

- Answers for review questions
- The Six Types of Information Systems and their Functions
- Steps in Information Systems Development
- Advantages and disadvantages of service level agreement
- Service Packages and Service Level Packages
- Event Management Goal and objectives
- ITIL Service Level Agreement Structure
- Continual Service Improvement Types of Metrics
- Application Management Roles and Responsibilities
- How to root Ulefone Be Touch in less than an hour

Database Management And Software	DevOps	Devops Engineering	Distributed Computing	Emerging Trends and Technologies	Enterprise Architecture	ERP	Event Access and Request Fulfillment	Event Management		
Financial Management	Game Development	Gamification	Hadoop	Help Desk	High-Performance Workplace	How to Develop Implement and Enforce ITIL Best Practices	Incident Management	Information Security		
Information Security Engineering	Information Security Management	IOS Development	ISO 20000	ISO 27000	IT Asset Management	IT Governance Metrics Measurements and Benchmarking	IT Infrastructure Engineering			
IT Management	IT Operations	IT Operations Management	IT Process Engineering	IT Product Management	IT Professionals Guide to Policies and Procedures	IT Program Management	IT Risk Management	IT Security		
IT Service Continuity Management	IT Service Monitoring and Control	IT Service Strategy	IT Services	ITIL	ITIL and ISO 20000	ITIL and ITSM ROI Calculator	ITIL Complete Process Capability Assessment			
ITIL Costs and Costing Catalogs White Paper	ITIL CSI	ITIL Fact Sheets	ITIL Financial Management	ITIL Mind Maps	ITIL Mindmaps	ITIL Problem Management	ITIL Process Mind Maps	ITIL RCV Release Control and Validation		
ITIL Readiness Assessment	ITIL Release Management	ITIL Security Mgt	ITIL Service Desk	ITIL Service Level Management	ITIL Service Operation	ITSCM Continuity Management	ITSM in Internal Clouds	ITSM in Public Clouds		
ITSM Starter	ITSM Tool Requirements	Java Architecture	Java Development	Knowledge Management	Laptops and Handheld Devices	Linux System Administration	Marketing Campaign Management			
Middleware And Integration Software	Mobile and Wireless	Mobile Development	Mobile Device Management Policies	Mongodb	Network Administration	Network Engineering	Network Security	Network Security Engineering		
Networking and Communications Equipment	Networking and Communications Services	News	NOSQL	Online Marketing	Open Source	Operational Support and Analysis	Organizational Behavior and Leadership	Outsourcing	PCs	
Perl Development	PHP Development	Planning Protection and Optimization ITIL PPO	Policies and Procedures	Problem Management	Problem Management ITIL Compliant	Products	Programming Analysis	Project Coordination		
Project Engineering	Project Management	Project Management with PRINCE2 and PMBOK	Python Development	Quality Engineering	Regulatory Compliance	Release and Deployment Management	Risk Management			
Roles and Responsibilities	Roles and Responsibilities for ITIL	Ruby Development	Sap Erp	Security Engineering	SEM Marketing	SEO Marketing	Servers and Storage	Service Asset And Configuration Management	Service Catalog	
Service Design – Process Capability Assessment	Service Design Tool	Service Desk	Service Desk Process	Service Desk Toolkit	Service Level Management	Service Level Management and SLA	Service Monitoring and Control			
Service Offerings and Agreements	Service Operation	Service Operation – Process Capability Assessment	Service Portfolio Management	Service Strategy	Service Strategy – Process Capability Assessment	Service Transition				
Service Transition – Process Capability Assessment	Service Validation and Testing	Sharepoint Administration	Sharepoint Development	Shell Scripting	Six Sigma	SLM Service Level Management	Social Media Marketing			
Software Development	Software Development Engineering	Software Engineering	Software Engineering Management	Software QA	Statistical Analysis	Storage Systems And Management	Strategic Planning	Supplier Management		
Supply Chain Management	Support Analysis	System Administration	Systems Analysis	Systems Engineering	Technical Support Engineering	Teradata	Test Engineering	Ui Development	User Interface Design	User Testing
Ux Ui Design	Virtualization	Web Application Development	Web Architecture And Development	Web Development	Web Programming	Web Services	Windows Systems Administration			

© 2015 The Art of Service | The IT Management Guide This site is maintained by an official ATO, and is not the official brand site. ITIL® is a Registered Trade Mark of AXELOS Limited. The Swirl logo™ is a Trade Mark of AXELOS Limited.